

# SQL AND CHIROTOUCH UPDATE

## Upgrade Process for Microsoft SQL Server and ChiroTouch

### General Disclaimer:

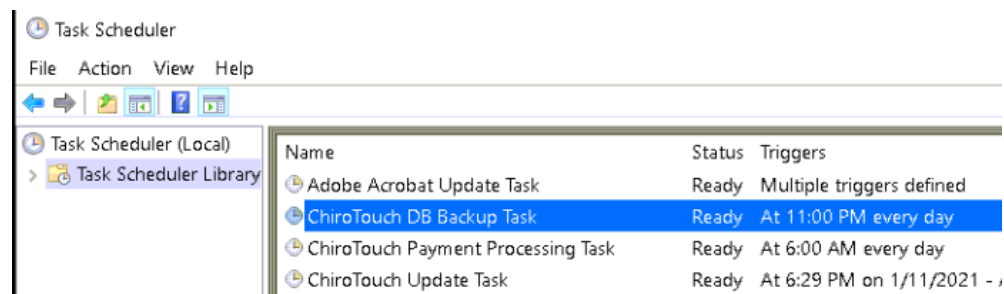
The information contained in this publication is provided for informational purposes only and is provided AS IS without warranty of any kind, express or implied. In addition, this information is based on IPS's current product plans and strategy, which are subject to change by IPS without notice. IPS shall not be responsible for any damages arising out of the use of, or otherwise related to, this publication or any other materials. Nothing contained in this publication is intended to, nor shall have the effect of, creating any warranties or representations from IPS or its suppliers or licensors, or altering the terms and conditions of the applicable agreement(s) governing the use of IPS's software, services and solutions. © 2021 Integrated Practice Solutions, Inc. All Rights Reserved.

### Purpose:

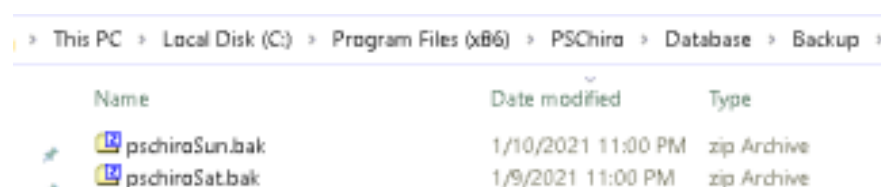
The purpose of this document is to outline how to uninstall your current SQL version and install SQL 2017 which is a prerequisite in order to upgrade to CT 7.2.9. (*Note: ChiroTouch requires **at least** Microsoft SQL Server 2012 but recommends 2017*)

### Process:

- Run a backup of the ChiroTouch Database through Windows Task Scheduler



- In the "C:\Program Files (x86)\PSChiro\Database\Backup" directory make sure the backup zips



# SQL AND CHIROTOUCH UPDATE

- Uninstall the currently installed ChiroTouch Server through “Programs and Features”

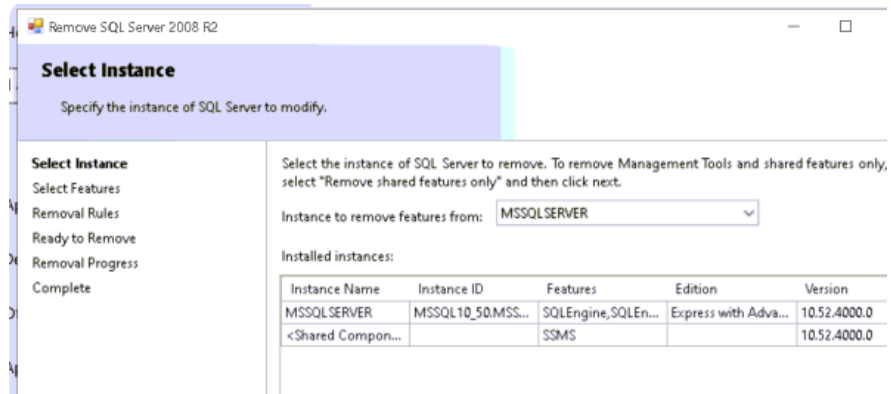


- Click Uninstall/Change on Microsoft SQL Server 2008 R2 (may vary on the Version installed)

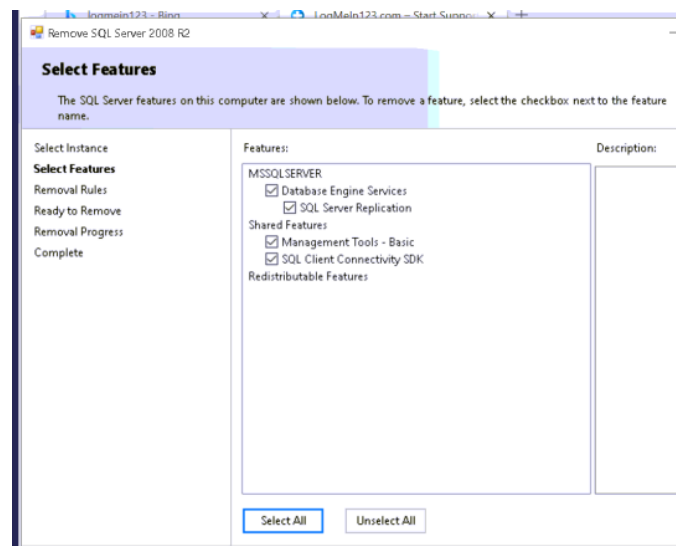


# SQL AND CHIROTOUCH UPDATE

- Uninstall the “Default instance” (MSSQLSERVER) of SQL



- Select all features button to remove all components of SQL 2008 R2



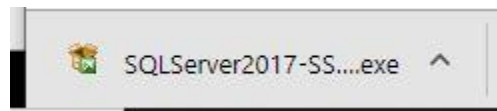
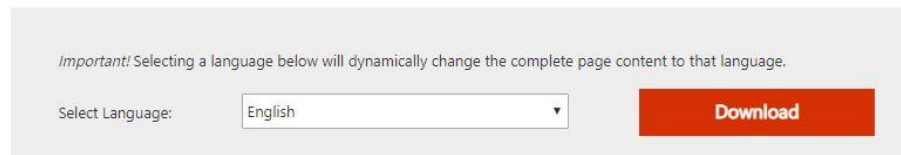
- On the last tab select Remove to uninstall
- Reboot Server
- Navigate to the “C:\Program Files (x86)\PSChiro\Database” folder and locate the files named PSChiro.mdf and PSChiro.ldf. **Rename these files to PSChiro.old.mdf and PSChiro.old.ldf respectively** (Note: You may need to modify permissions to rename these files)

# SQL AND CHIROTOUCH UPDATE

## Downloading and Installing SQL Server 2017 Express

- Acquire the SQL 2017 directly from the Microsoft Website.
  - Using the following URL for Direct Download:
    - <https://download.microsoft.com/download/5/E/9/5E9B18CC-8FD5-467E-B5BF-BADE39C51F73/SQLServer2017-SSEI-Expr.exe>

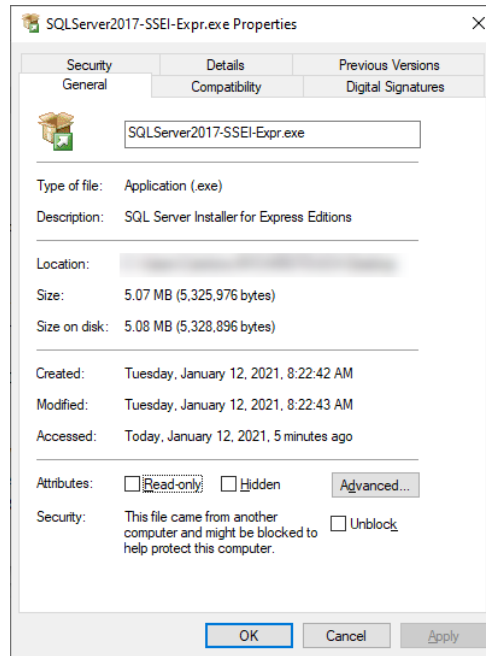
Microsoft® SQL Server® 2017 Express



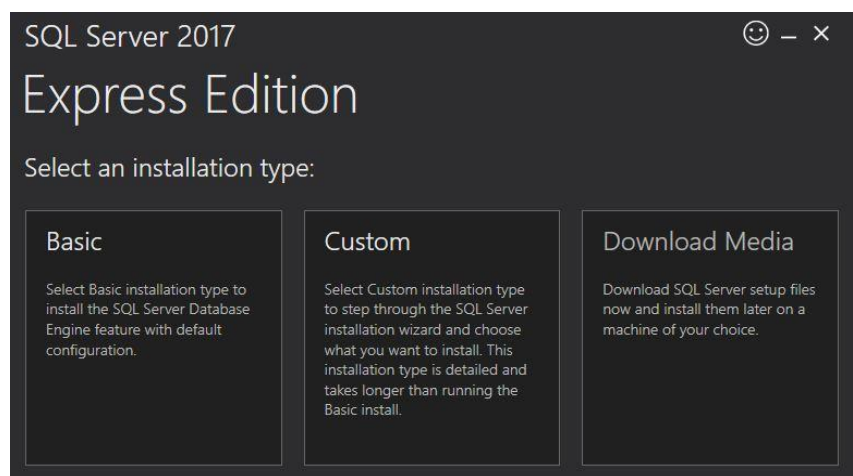
\*\*\*\*This may take a few minutes depending on the network speeds available. \*\*\*\*

# SQL AND CHIROTOUCH UPDATE

- Locate the **SQLServer2017-SSEI-Expr.exe**
- Right-click the installer file and select **“Properties”**
  - If you see Unblock, “check the box” and hit **“Apply”**
    - Unblock will disappear
  - Then finally click **“OK”**

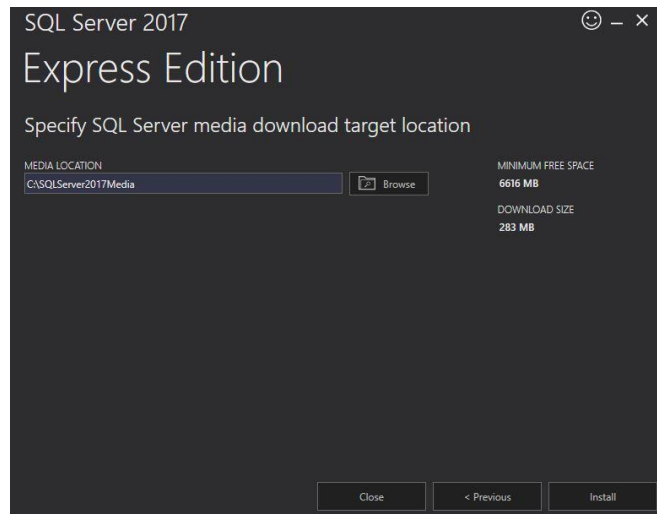


- Next, Launch the Installer
- Select the **“Custom”** setup for installing SQL for a ChiroTouch database.



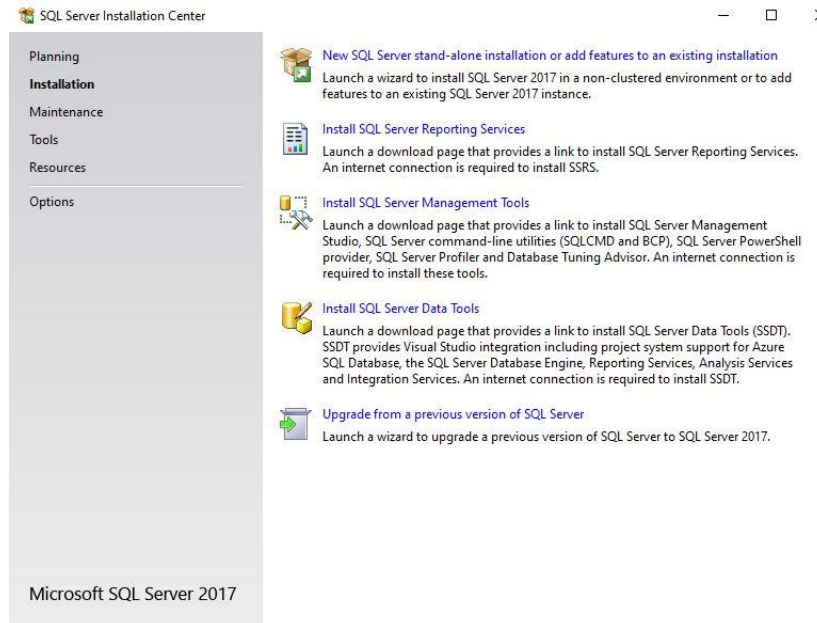
# SQL AND CHIROTOUCH UPDATE

- On the Next page you will be able to select where you want the media files downloaded. Navigate to the “C:\Program Files (x86)\PSChiro\Database\Setup” folder unless the client requests a different location.
- Then click on “Install”

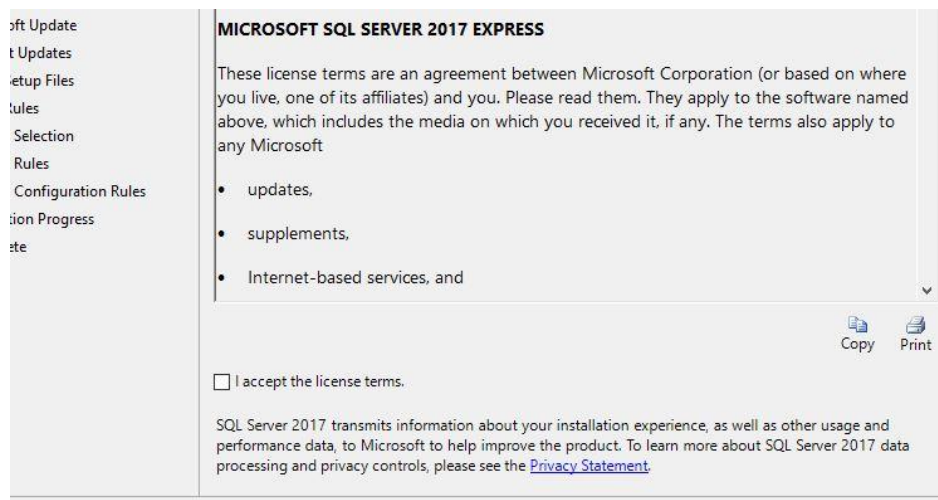


# SQL AND CHIROTOUCH UPDATE

- The SQL Server installation Center page will open
- On the Installation tab Select **“New SQL Server stand-alone installation or add features to an existing installation”**.

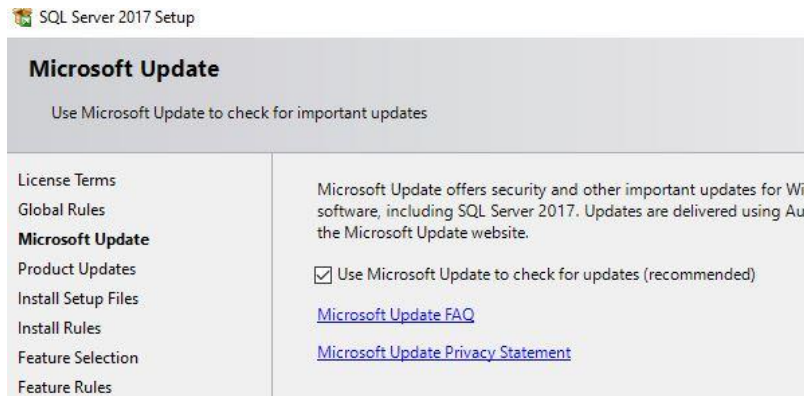


- On the License Terms page, check the box for I accept the license terms. Click Next.

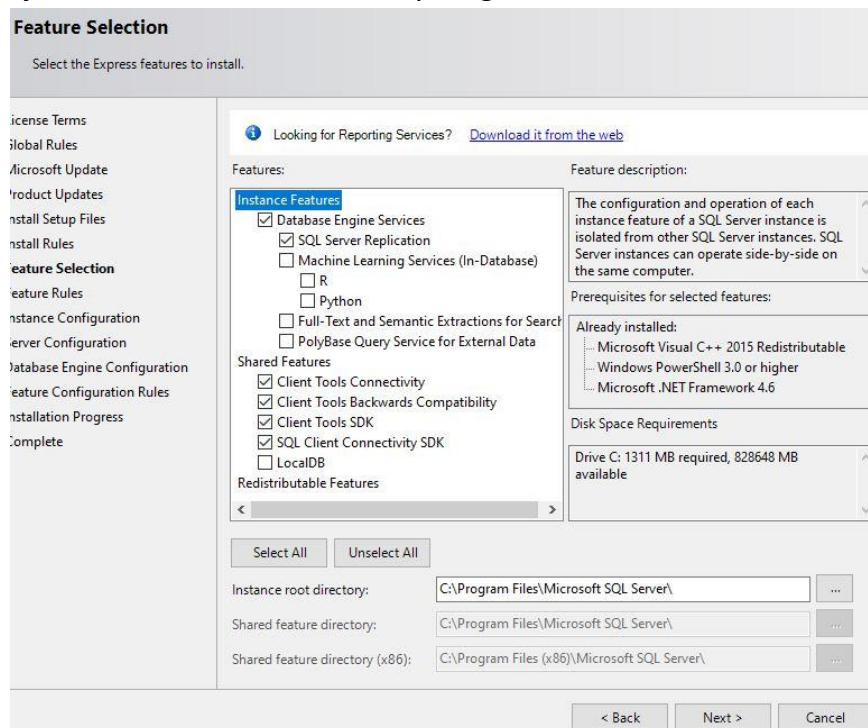


# SQL AND CHIROTOUCH UPDATE

- (MUST) Make sure to check the box for “include SQL Server product updates.” Click Next.



- On the Feature Selection page, make sure “Database Engine services” and “Client Connectivity Tools” are selected and everything else has been deselected



- On the Instance Configuration page, select “Default Instance.” Click Next.
- On the Server Configuration page, change the account name to use **NT AUTHORITY\SYSTEM** instead of MSSQLSERVER for SQL Server Database Engine.
  - Click on the dropdown menu arrow and click on browse



# SQL AND CHIROTOUCH UPDATE

Service	Account Name	Password
SQL Server Database Engine	NT Service\MSSQL\$TEST	
SQL Server Browser	NT Service\MSSQL\$TEST	

Red arrows point to the Account Name column and the Password column.

- Search for **SYSTEM** account. Click OK.

Select User, Computer, Service Account, or Group

Select this object type:  
User, Service Account, Group, or Built-in security principal

From this location:  
Entire Directory

Enter the object name to select (examples):  
**SYSTEM**

Check Names

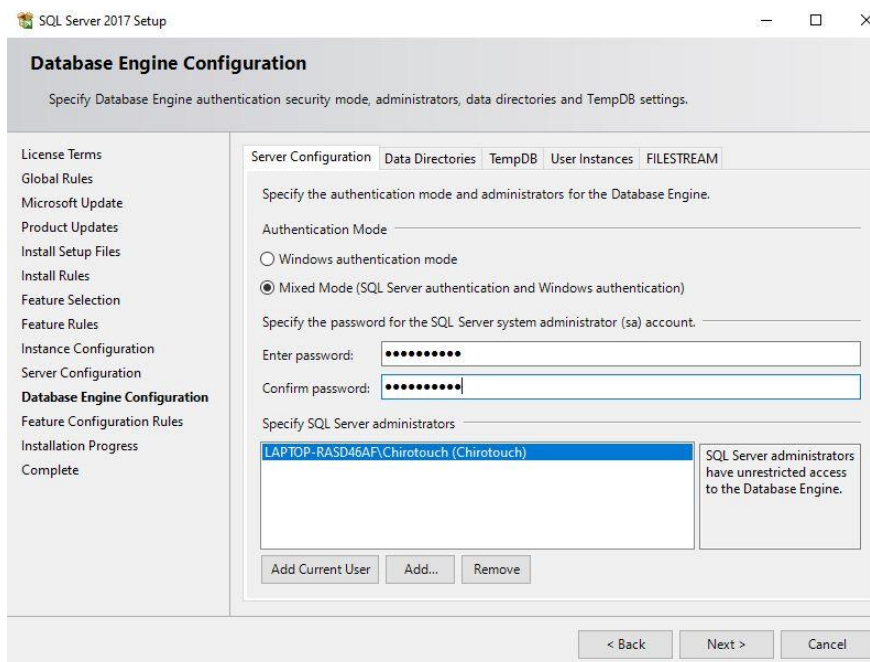
Advanced... OK Cancel

Red boxes highlight the object name input field and the OK button. A red arrow points to the Check Names button.

- It should now say “**NT AUTHORITY\SYSTEM.**” Click Next.

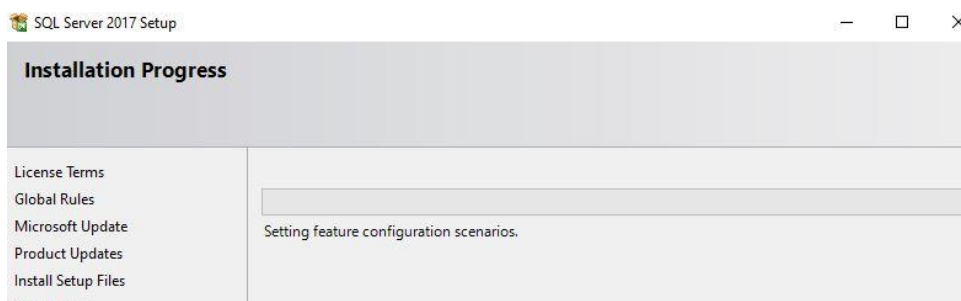
# SQL AND CHIROTOUCH UPDATE

- On the Database Engine Configuration page, Select **Mixed Mode**. Type in the password for the SA account.



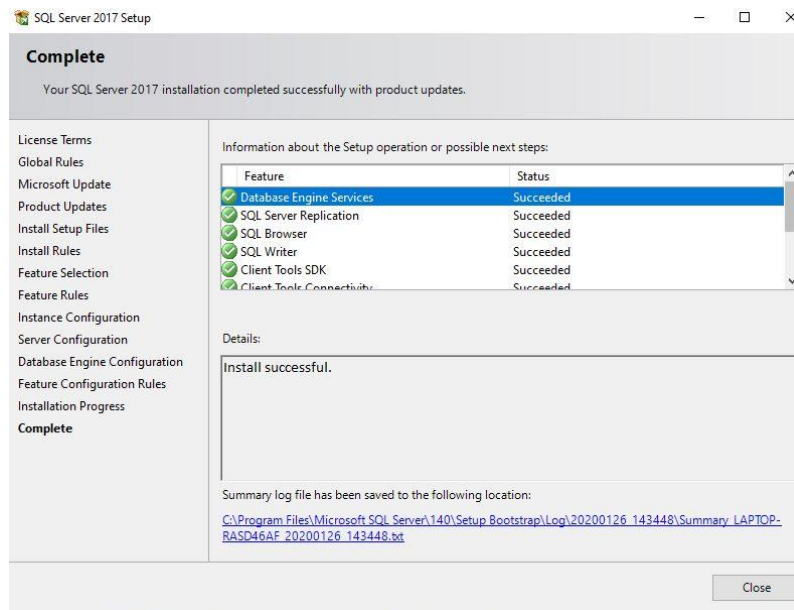
Note: SQL will encounter an error during the install if the computer name and the user account are named the same. Make sure whichever account you are logged in is not named the same as the computer. Example: Server\server. If they are, remove the account and only have the Chirotouch account listed.

- Click Next.
- On the Error Reporting page, click next.
- It should take you to the Installation Progress page.
- Allow it to complete

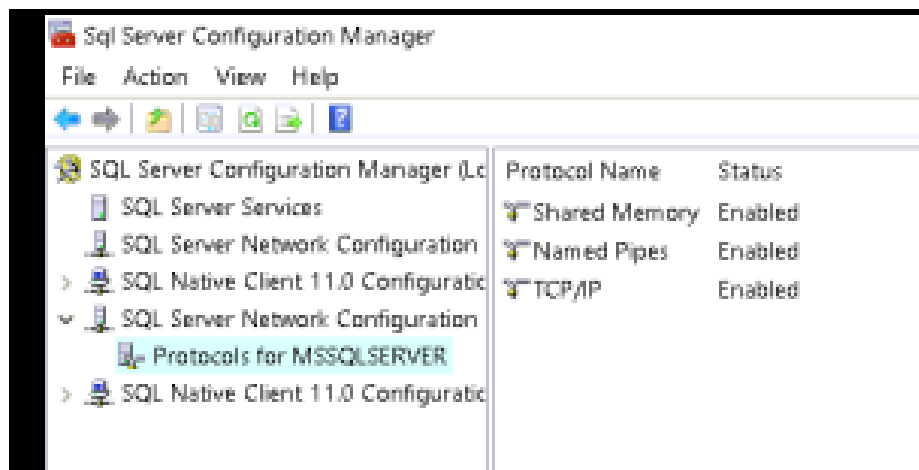


# SQL AND CHIROTOUCH UPDATE

- If all is good, you will see all green check marks. Click Close and close all the SQL installation windows.

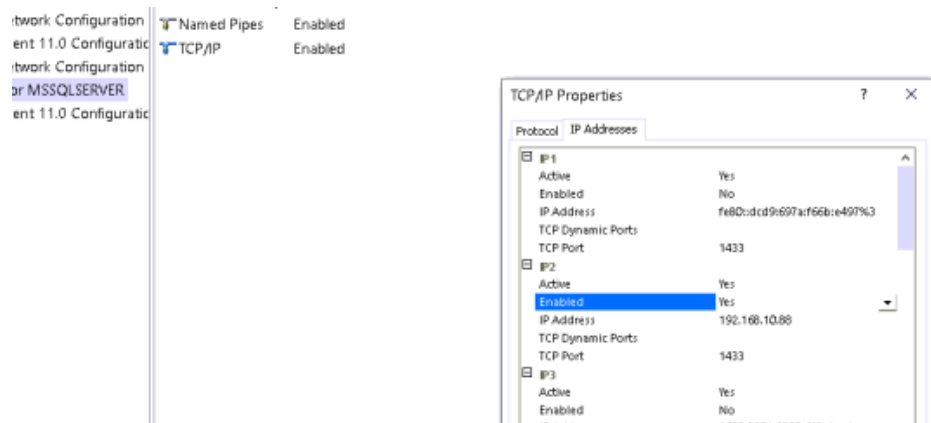


- Open “SQL Server Configuration Manager” in the start menu under **Microsoft SQL Server 2017**
- Expand the SQL Server Network Configuration tree and select the Protocols for MSSQLSERVER
- On the right tab make sure both the **Named Pipes** and **TCP/IP** Protocol are enabled



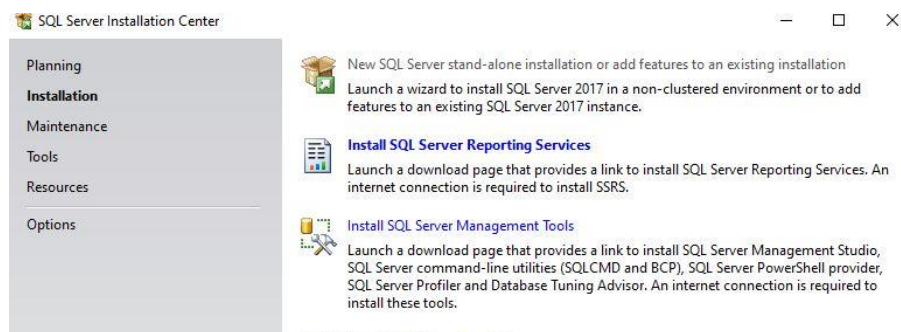
# SQL AND CHIROTOUCH UPDATE

- Go to **Properties** under the **TCP/IP Protocol** and select the **IP Address tab**
- Enable the server's local IPv4 address.



- Click **Apply** and **OK**.
- **Restart** the **SQL service** to apply changes.

- Server Management Studio will need to be downloaded and installed from the SQL Server Installation Center tab.



- Select **Install SQL Server Management Tools**. It will navigate to the Microsoft Website to download Management Studio 18. Select the download button.

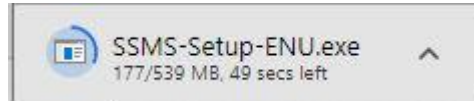
# SQL AND CHIROTOUCH UPDATE

SSMS is free!

## Download SSMS

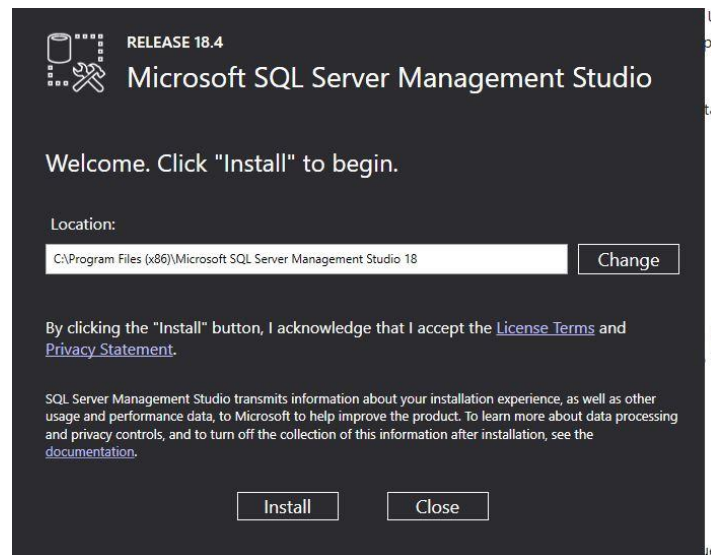
 [Download SQL Server Management Studio \(SSMS\)](#)

SSMS 18.4 is the latest general availability (GA) version of SSMS. If you have a previous GA version of SSMS 18 installed, installing SSMS 18.4 upgrades it to 18.4.

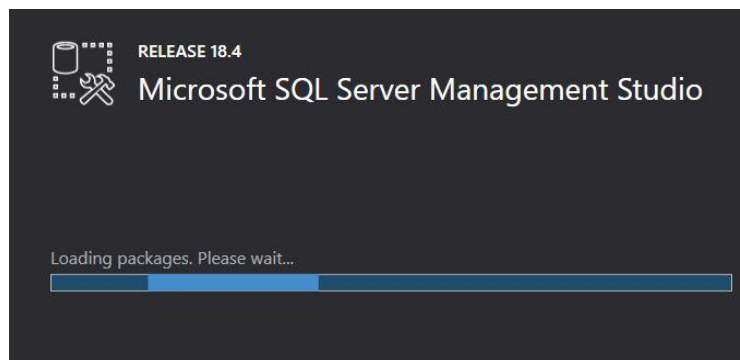


# SQL AND CHIROTOUCH UPDATE

- The installer for SQL Server Management Studio will start when selecting the downloaded file.



- Select Install to begin installing Management Studio

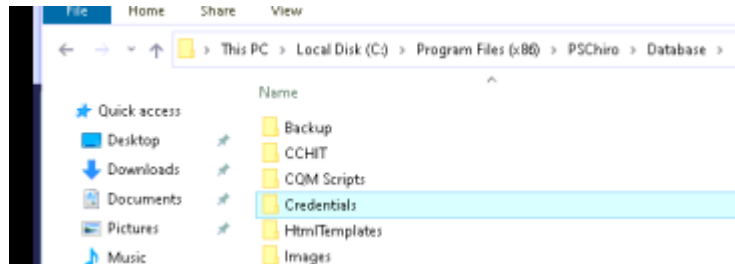


Once installed a reboot may be required to finish the installation. If so reboot the computer and check to make sure the program has installed.

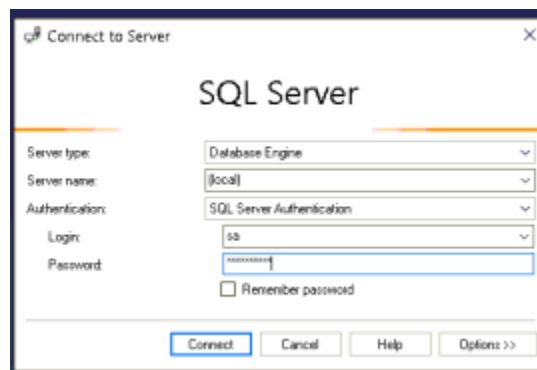
# SQL AND CHIROTOUCH UPDATE

## Restoring the ChiroTouch Database

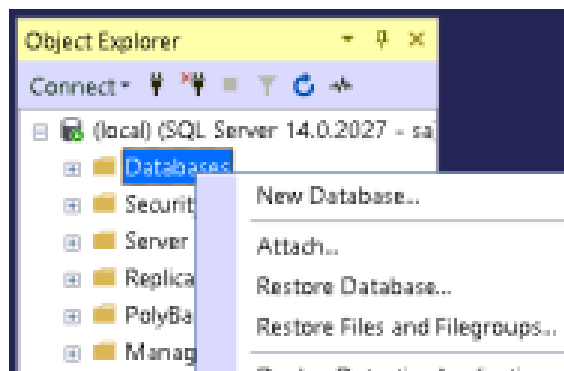
- Go to the backup that was created during the first part of the process under the “C:\Program Files (x86)\PSChiro\Database\Backup” directory and unzip the file to the database folder.
- **Delete** the **Credentials** folder inside the **Database** folder



- Launch **SQL Management Studio** and log in with the SA credentials that were set during the install.



- Right Click “**Database**” and select the “Restore Database” selection

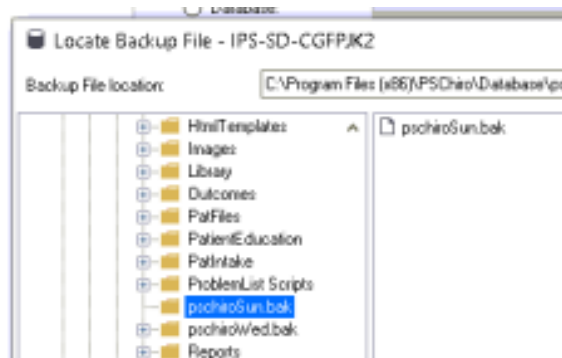


- Select the “**Device**” tab and select on the right box

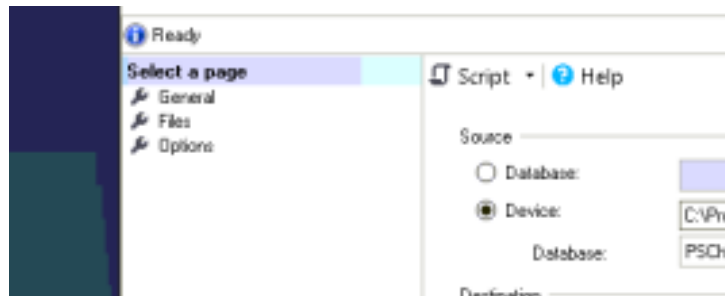
# SQL AND CHIROT TOUCH UPDATE



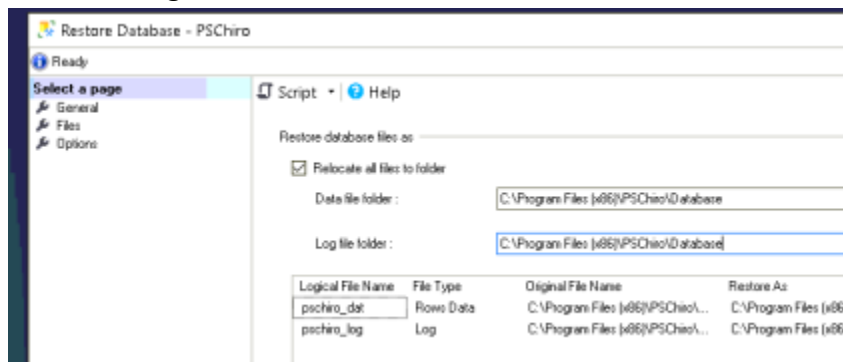
- Select the Add button to navigate to the unzipped backup folder to restore the PSChiro.bak file (must have the folder selected on the left panel for the .bak to appear)
- Select “OK” on the two open tabs



- Next, click on the Files tab



- Click on the Relocate all files to folder box and enter the path to the database folder in the Data file folder and the Log file folder fields.



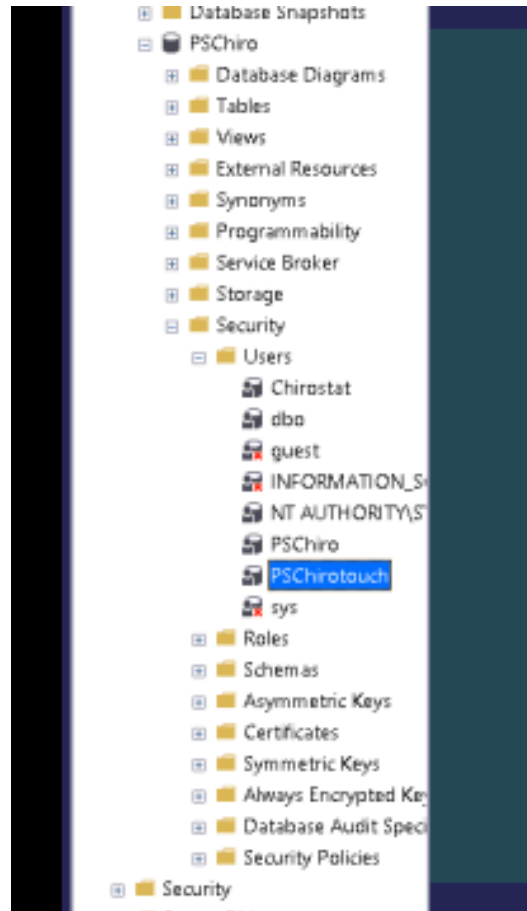


# SQL AND CHIROTOUCH UPDATE

- To attach the database click on the **OK** button

# SQL AND CHIROTOUCH UPDATE

- Once the database is attach expand the PSChiro database and navigate to the **“Security”** then under **“Users”**
- **Right-click on PSChirotouch and click Delete.** Accept any prompts that may come up asking if you are certain you want to delete.

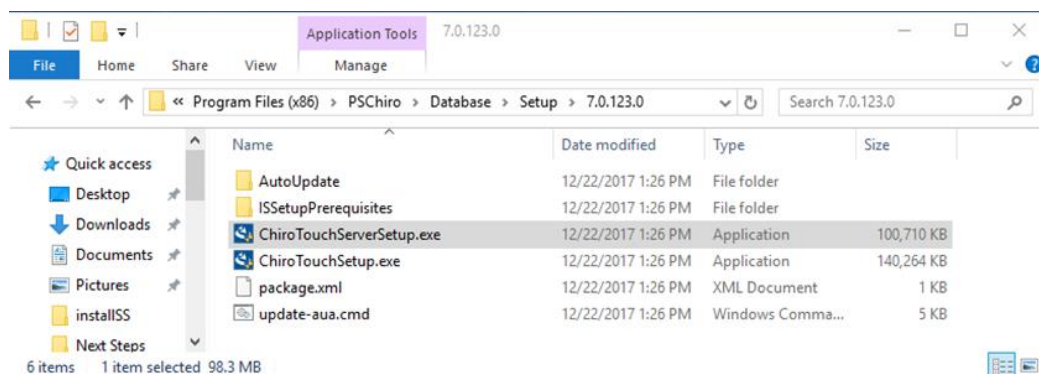


**Management Studio can be closed at this point**

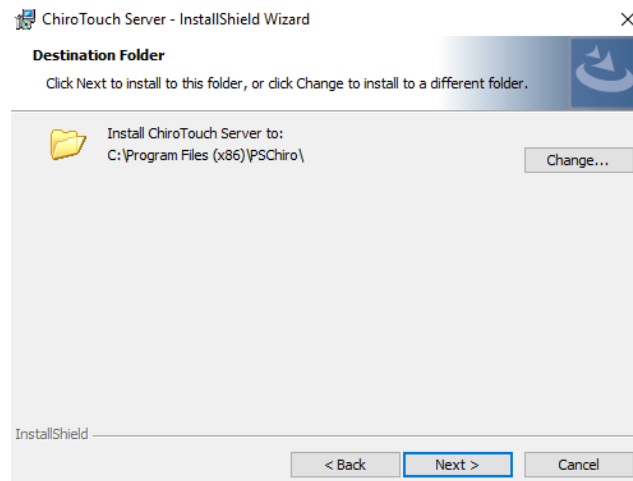
# SQL AND CHIROTOUCH UPDATE

## Installing the ChiroTouch Update

- Navigate to the “C:\Program Files (x86)\PSChiro\Database\Setup” folder and locate the 10.0.844.0.zip file.
- Unzip the file to its location. (do not remove the 10.0.844.0 part in the path) A folder named ‘10.0.844.0’ should appear in the C:\Program Files (x86)\PSChiro\Database\Setup folder at this point.
- Navigate into the 10.0.844.0 folder. Inside you will find the files that you will need to run the software update. Start by running ChirotouchServerSetup.exe

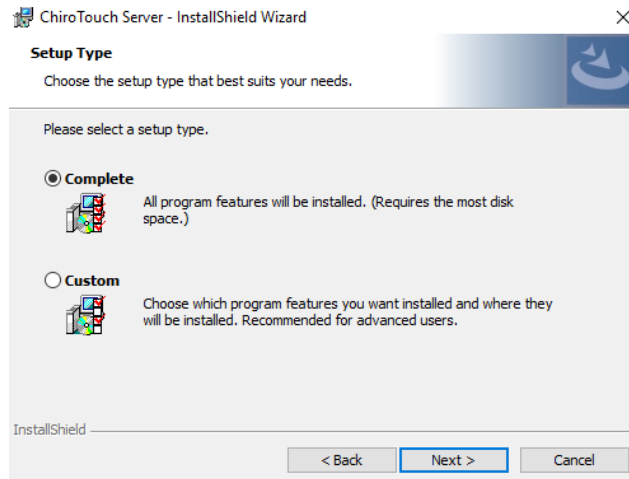


- Select the default settings when installing ChiroTouch

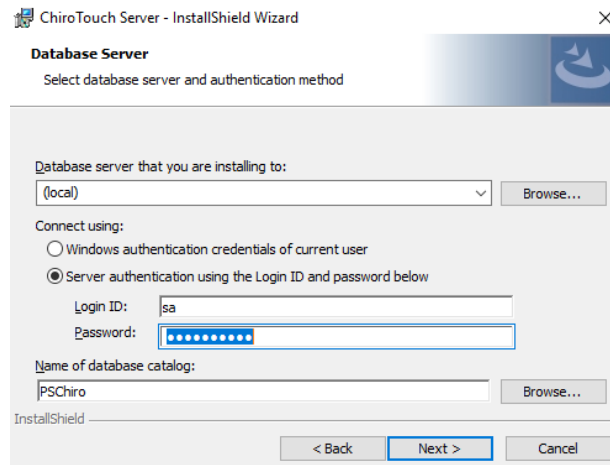


# SQL AND CHIROTOUCH UPDATE

- On the next panel select **Complete** to do a complete update to all services for ChiroTouch.



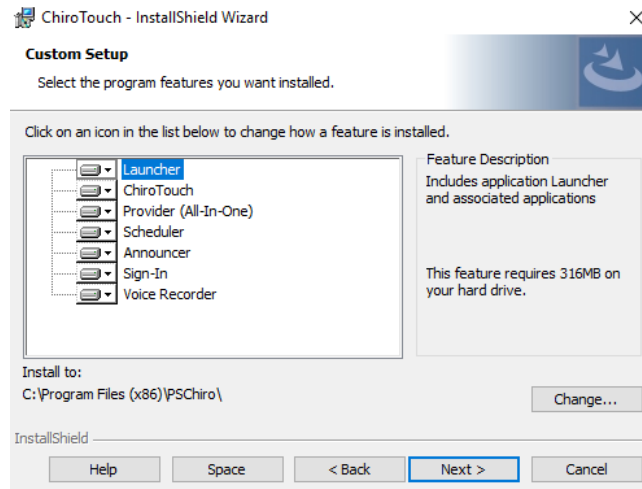
- On the next panel you will need to enter the SA password to connect to the SQL database.



- On the next panel select Install and the program will start to install. Once it is finished select the "Finished" tab on the last panel displayed.

# SQL AND CHIROT TOUCH UPDATE

- When the server setup is complete, run the ChiroTouchsetup.exe.



- On the final panel select Install. The program will begin installing. Once it is finished select the Finish button.
- When the update is complete navigate back to the setup folder and delete the zip version of the software version folder.

If you experience an issue when opening ChiroTouch on the workstations after updating the server [Please see this FAQ.](#)